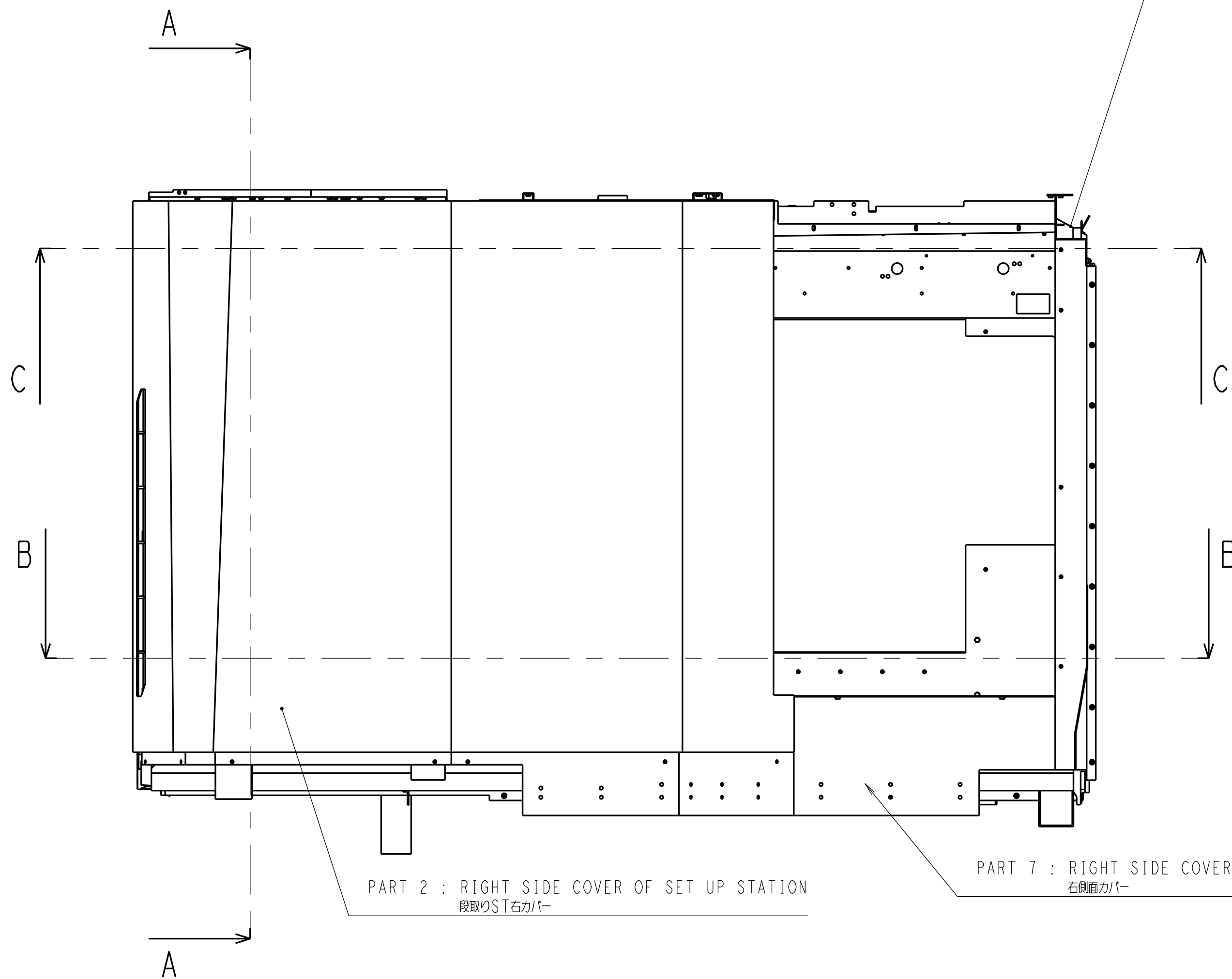
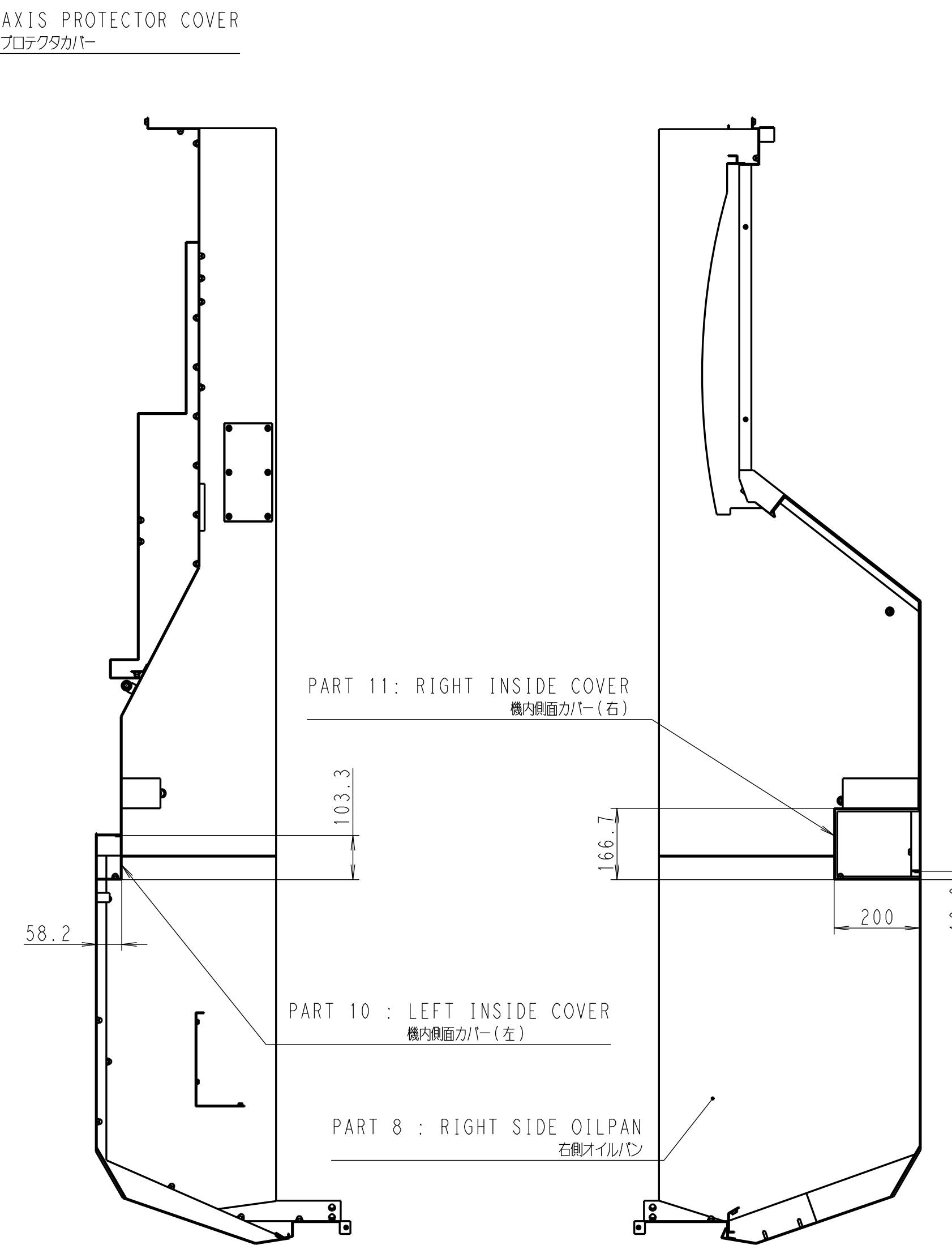


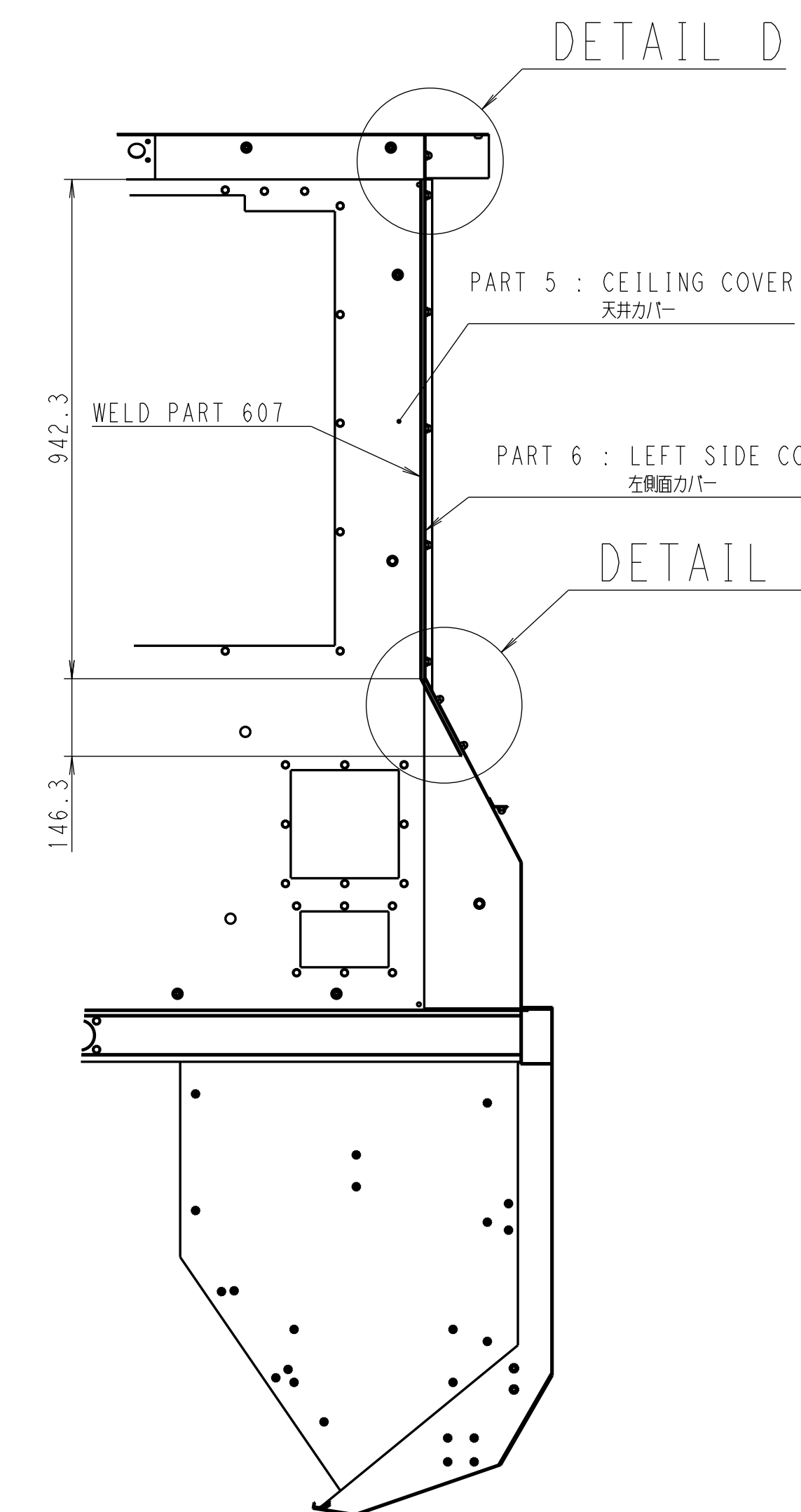
FRONT VIEW
正面図



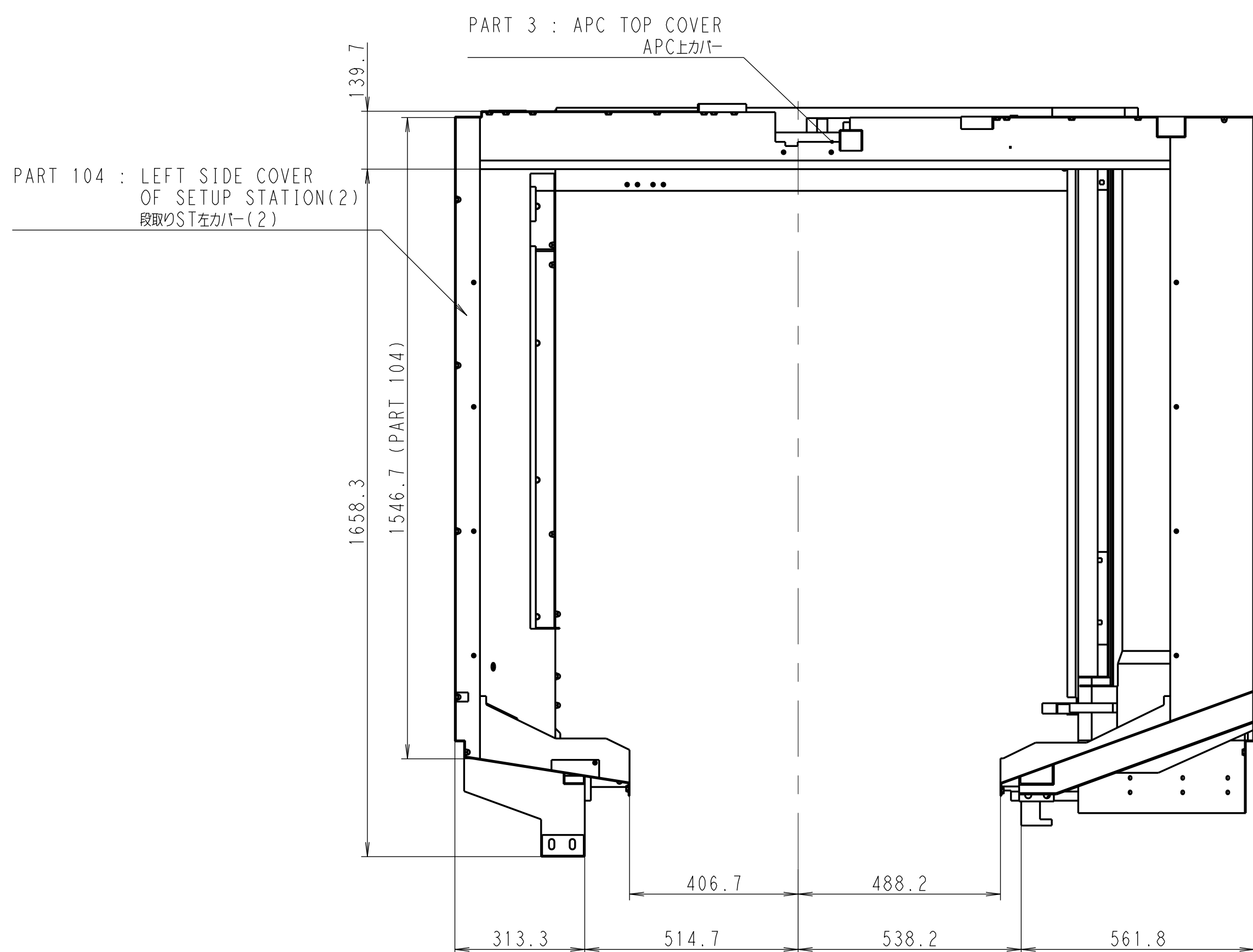
RIGHT SIDE VIEW
右側面図



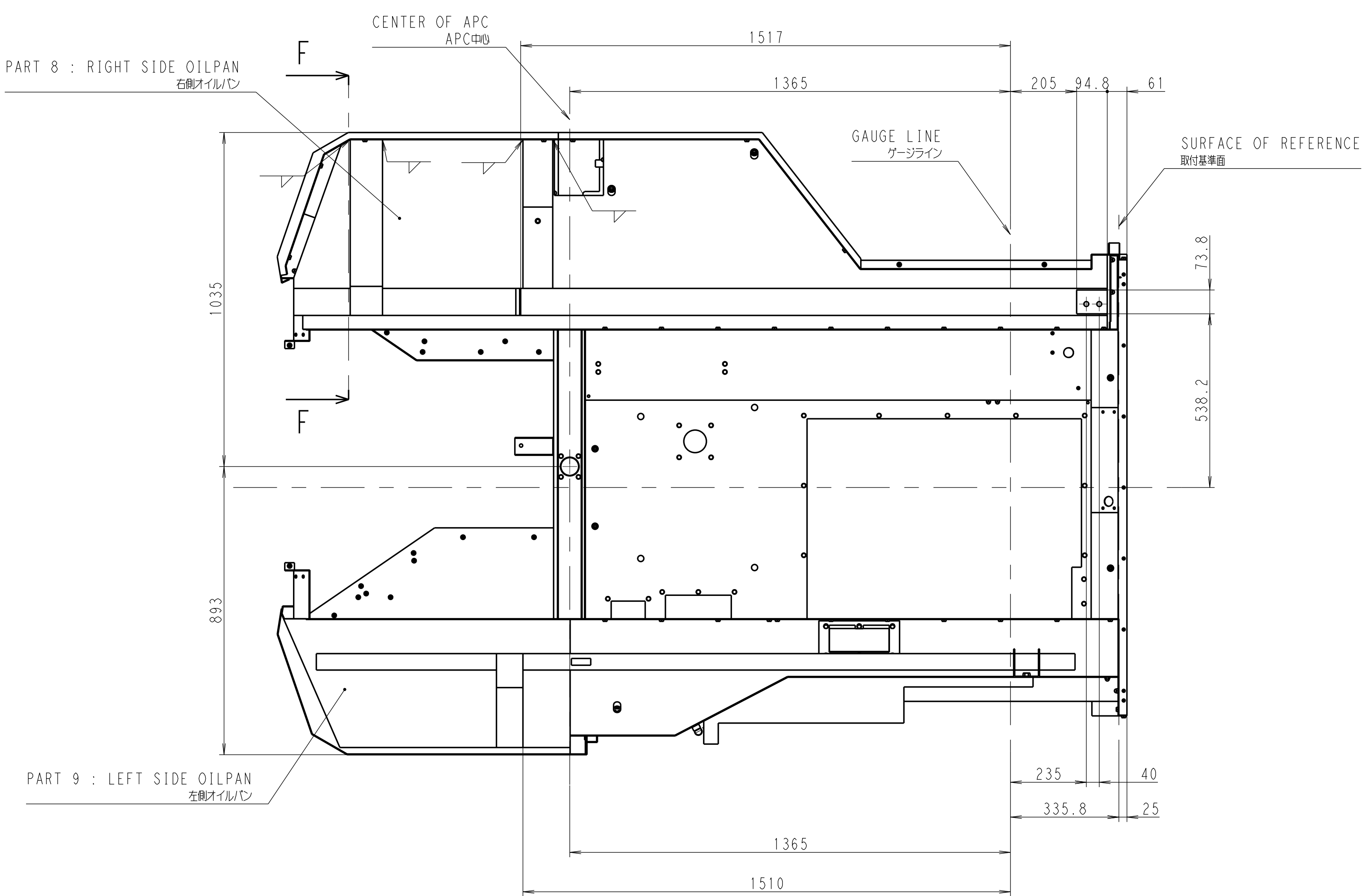
SECTION B-B



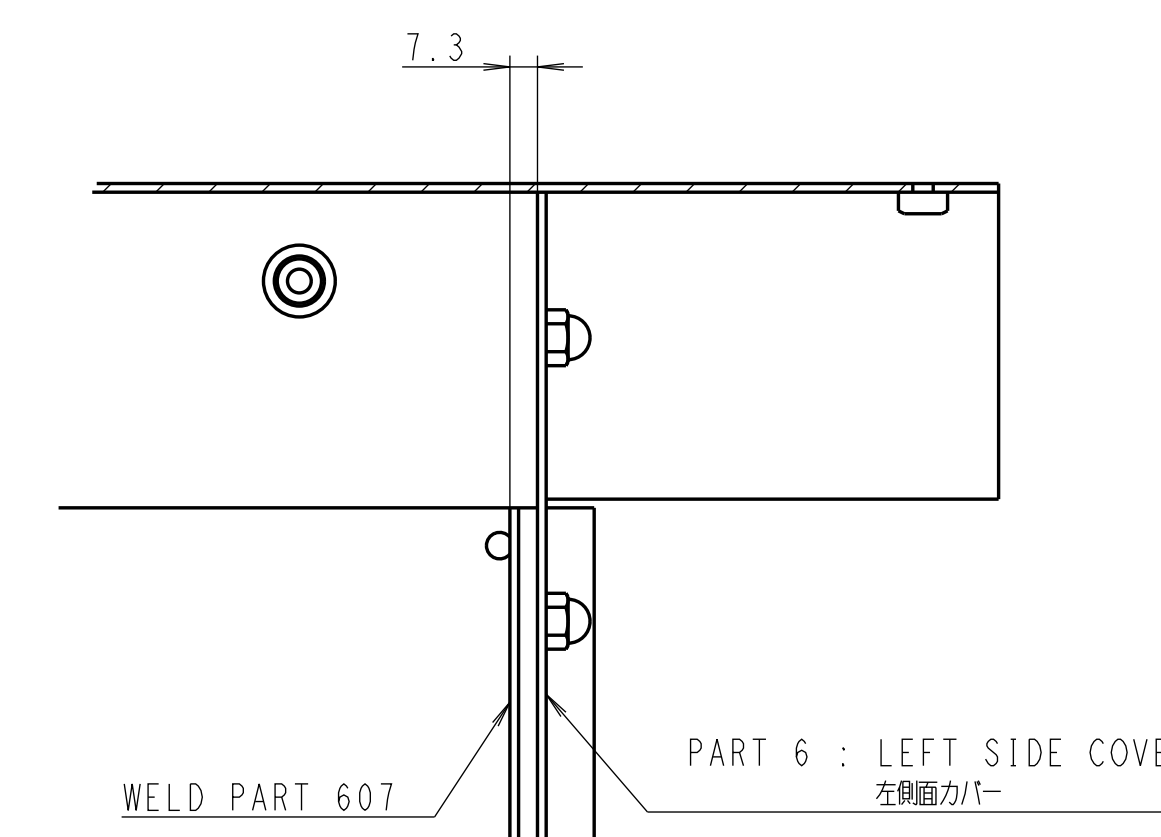
SECTION C-C



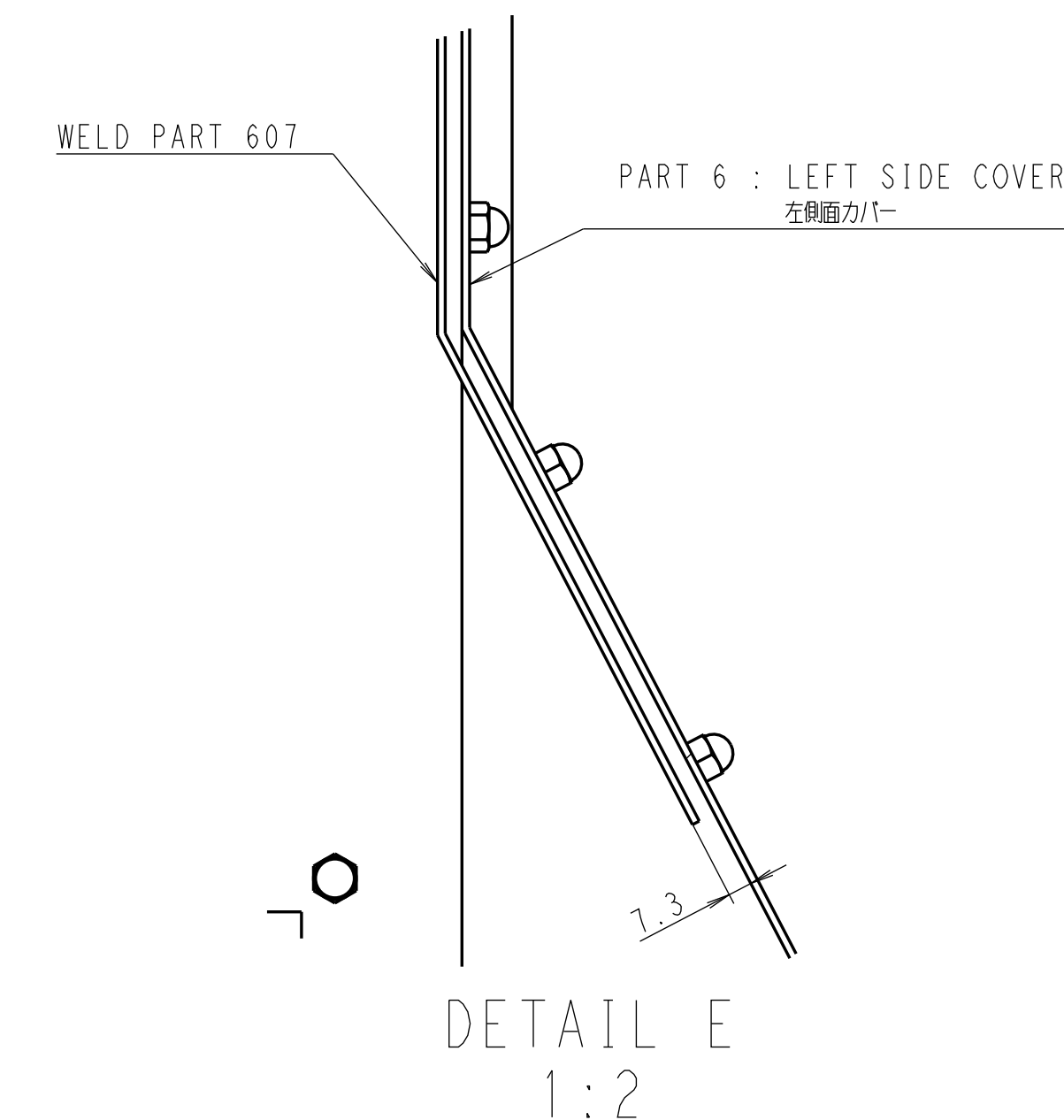
SECTION A-A



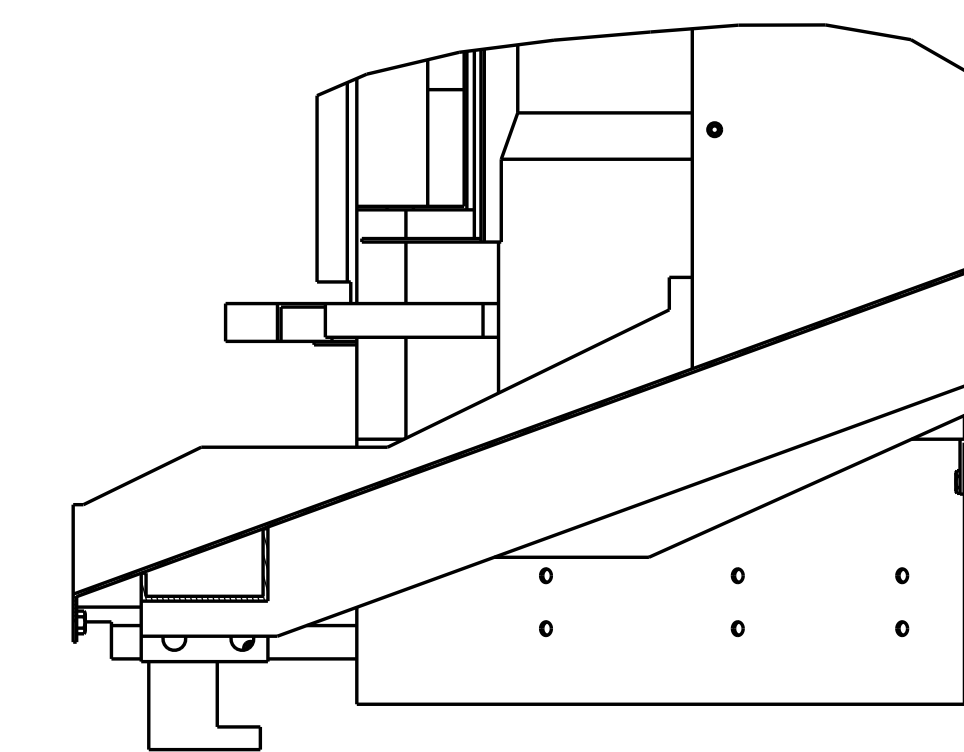
BOTTOM VIEW
底面図



DETAIL D
1:2



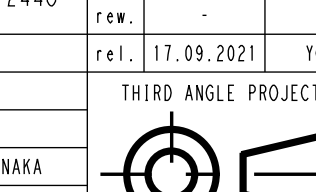
DETAIL E
1:2



ALL ASSEMBLY DIAGRAM (2/3)
全体組立図 (2/3)

PAINT COLOR: CALCITE WHITE (TEXTURED)
塗装色: カルサイトホワイト(凹凸)
NO OIL LEAKAGE ALLOWED AT JOINTS AND WELDS (SEALANT ALLOWED)
組立継ぎ目及び、溶接部の漏油は許容されず(シーラント使用可)
FINISH WITH SEALANT TO * MARKED WELDED AREA (WITH GOOD APPEARANCE)
*印は溶接部のシーラントでの仕上がり(美観優先)

The property and copyright is certified by DMG MORI SEIJI CO. Copyright according to ISO 16118 standard.		Part Number	wt.	Volume	Name	Proc.	Document type
		5272448	26.08.2021	YUICHI TANAKA	D.C.	MD	Part drawing
			rev.	17.09.2021	YOSHIMASU AZUMA	Material	Mass: 387.48 kg (Turnout): AD Scale: 1:10
					TOSHIMASU AZUMA	Material	SPEC 1
001	5113107	25.08.2021	YUICHI TANAKA				
002	5113054	25.08.2021	YUICHI TANAKA				
003	5114263	26.08.2021	YUICHI TANAKA				
Rev.	No.	Date	By	Date	Changed by		



CABIN-S - SMCB/MW/MWS Machining cabin
Cabin subcomponent
Drawing Number: 5272448
Rev.: 003
Type: Part drawing
Sheet: 2/15