

4 - Ø7 HOLE
 WELD M5 NUT ON BACK FACE
 クラ面にM5ナット溶接

t = 3.2

NO BURR ALLOWED AT EDGE
 エッジ部はねえのぼこと

CORNER C2-3 WHERE NO INDICATION
 角示なき角部C2~3のこと

TO BE BLACK OXIDE COATING (FERROSOFERRIC OXIDE COATING)
 黒染(四三酸化鉄皮膜処理)のこと

BLACK PAINT IS ALSO ALLOWED
 黒塗でも可

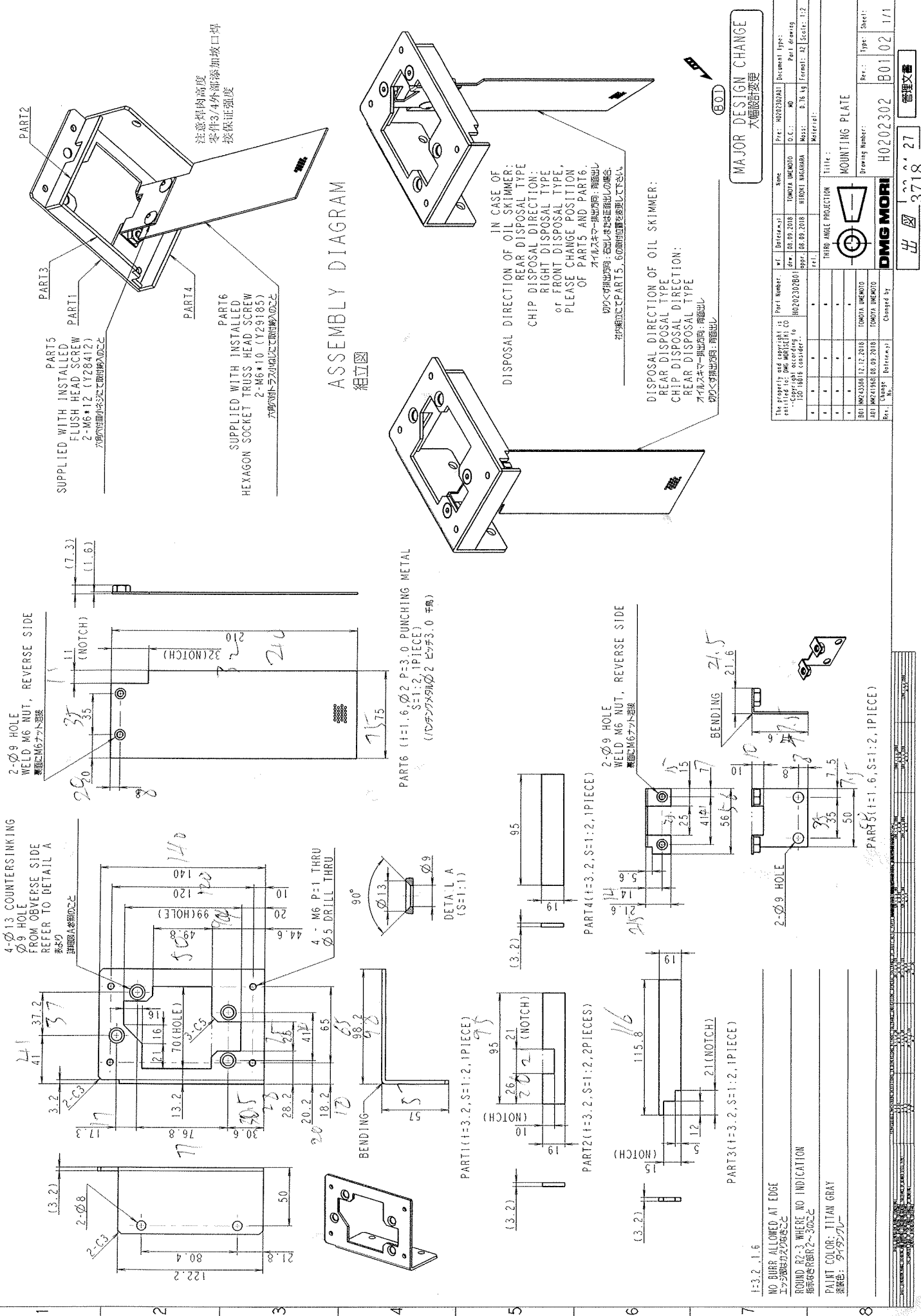
H1405951A01 OR EQUIVALENT
 H1405951A01の相当品

The property and copyright is entitled to: DMG MORI SEI CO. --Copyright according to ISO 16016 consider--		Part Number. 5483645	wf. drw. rev.	Date(s). 17.11.2023	Name KAZUHIRO IMADA	Pre. O.C.: MB	Document Type: Part drawing
			rel.	17.11.2023	MASAO FUKUMORI	Mass: 0.63 kg	Format: A3 Scale: 1:2
					Material: SPHC-P		
					Title: HOLDER - 15512582 HOLDER		
					Drawing Number: 5493645		
					Rev.: Type: Sheet: 001 1/1		



DMG MORI

3717

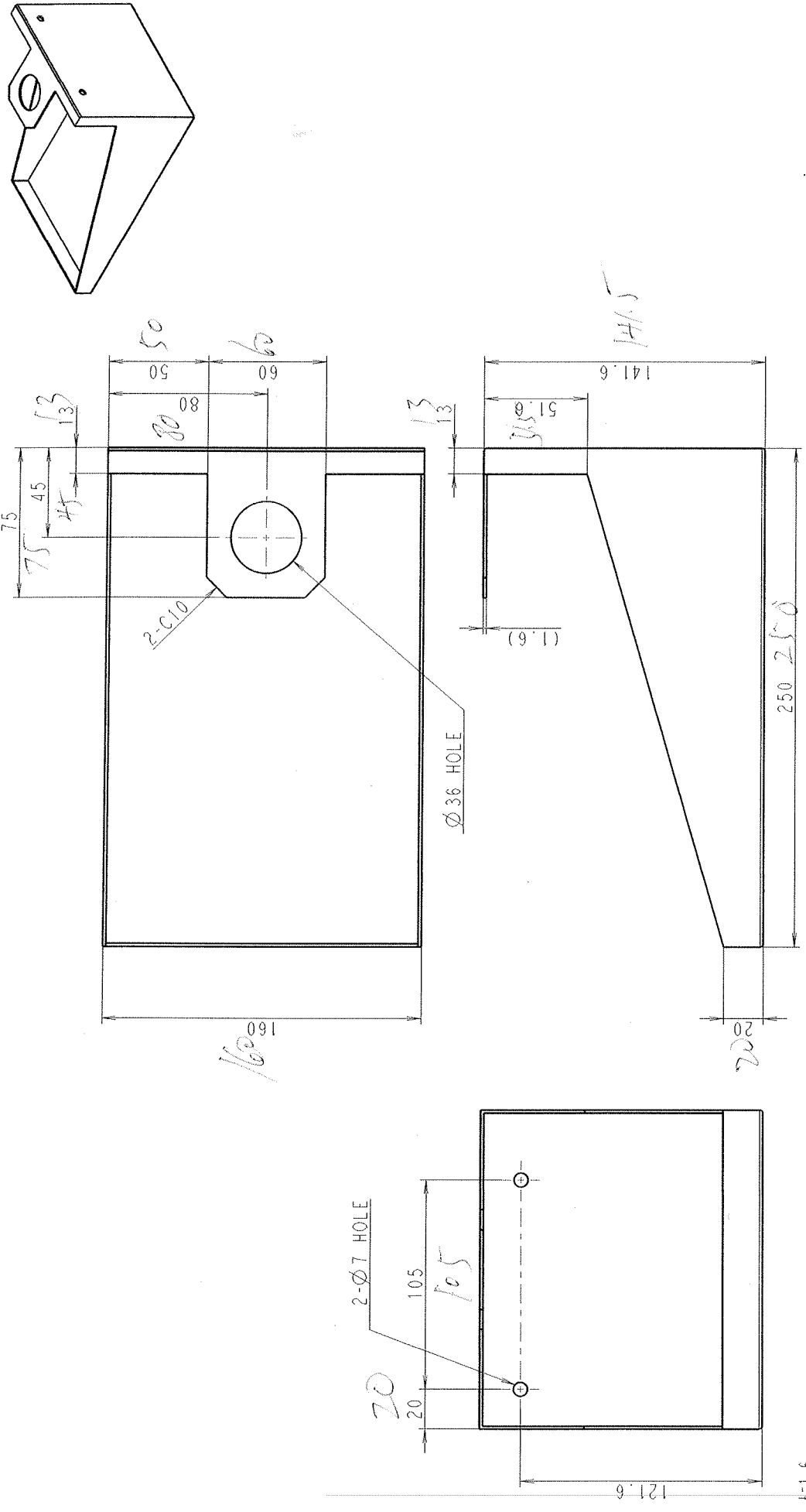
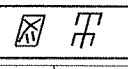


A B C D E F G H

WARNING: EXPORT CONTROLLED - RESTRICTED - CONFIDENTIAL
 Property of DMG MORI. Disclosure to foreign person or entity is prohibited. Contact Export Control Dept. for disclosure procedures and approvals. Violations are subject to sanctions incl. litigation.

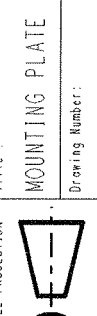
管理文書

22.04.21



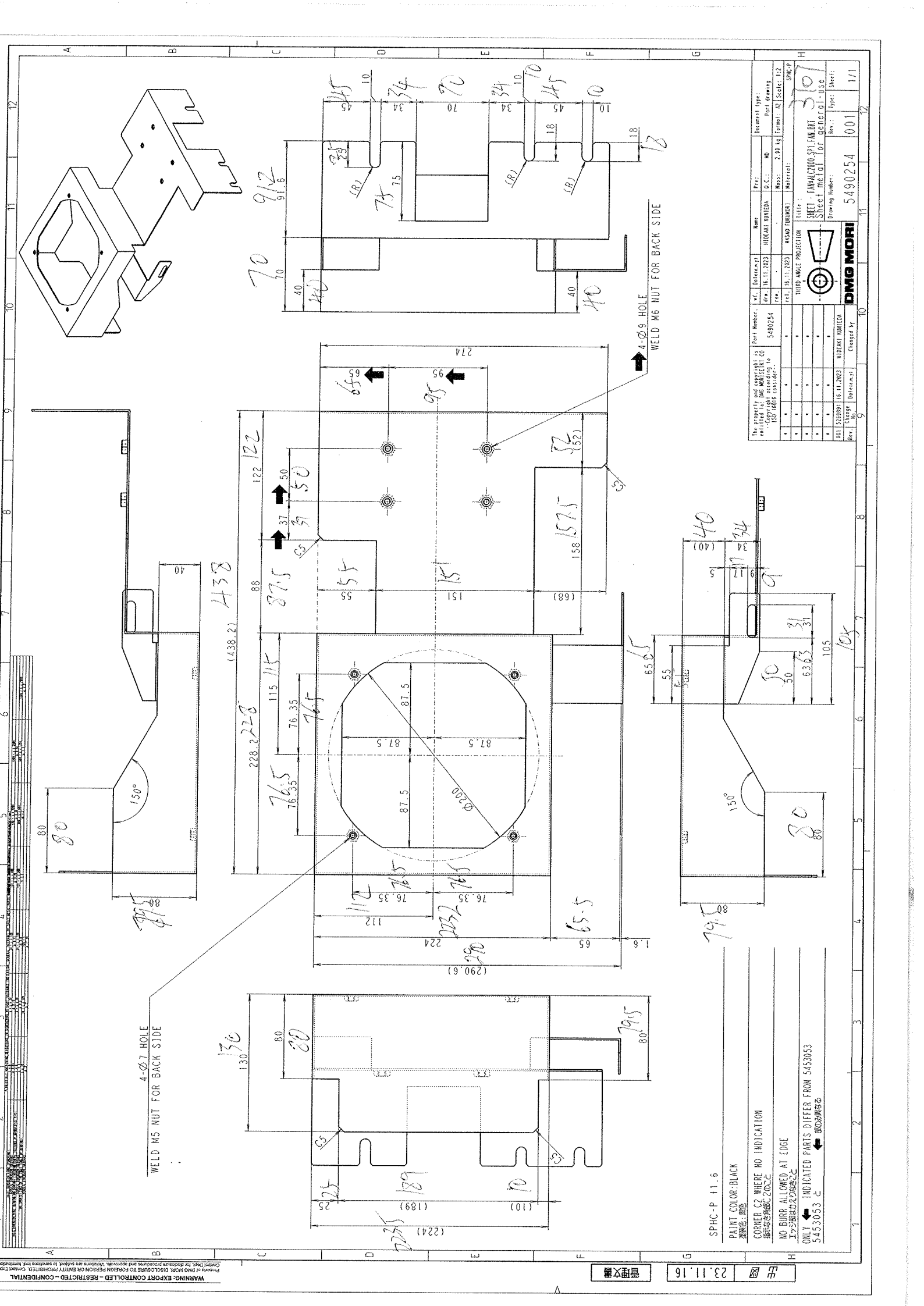
The property and copyright is entitled to: DMG MORI SEIKI CO. --Copyright according to ISO 10016 consider--		Part Number:	H0202303A01	Changed by		
Rev.	Change No.	Date				
1		08.09.2018	TOMOYA UEMOTO			
2		08.09.2018	Changed by			
3		08.09.2018				
4		08.09.2018				
5		08.09.2018				
6		08.09.2018				
7		08.09.2018				
8		08.09.2018				
9		08.09.2018				
10		08.09.2018				
11		08.09.2018				
12		08.09.2018				
13		08.09.2018				
14		08.09.2018				
15		08.09.2018				
16		08.09.2018				
17		08.09.2018				
18		08.09.2018				
19		08.09.2018				
20		08.09.2018				
21		08.09.2018				
22		08.09.2018				
23		08.09.2018				
24		08.09.2018				
25		08.09.2018				
26		08.09.2018				
27		08.09.2018				
28		08.09.2018				
29		08.09.2018				
30		08.09.2018				
31		08.09.2018				
32		08.09.2018				
33		08.09.2018				
34		08.09.2018				
35		08.09.2018				
36		08.09.2018				
37		08.09.2018				
38		08.09.2018				
39		08.09.2018				
40		08.09.2018				
41		08.09.2018				
42		08.09.2018				
43		08.09.2018				
44		08.09.2018				
45		08.09.2018				
46		08.09.2018				
47		08.09.2018				
48		08.09.2018				
49		08.09.2018				
50		08.09.2018				
51		08.09.2018				
52		08.09.2018				
53		08.09.2018				
54		08.09.2018				
55		08.09.2018				
56		08.09.2018				
57		08.09.2018				
58		08.09.2018				
59		08.09.2018				
60		08.09.2018				
61		08.09.2018				
62		08.09.2018				
63		08.09.2018				
64		08.09.2018				
65		08.09.2018				
66		08.09.2018				
67		08.09.2018				
68		08.09.2018				
69		08.09.2018				
70		08.09.2018				
71		08.09.2018				
72		08.09.2018				
73		08.09.2018				
74		08.09.2018				
75		08.09.2018				
76		08.09.2018				
77		08.09.2018				
78		08.09.2018				
79		08.09.2018				
80		08.09.2018				
81		08.09.2018				
82		08.09.2018				
83		08.09.2018				
84		08.09.2018				
85		08.09.2018				
86		08.09.2018				
87		08.09.2018				
88		08.09.2018				
89		08.09.2018				
90		08.09.2018				
91		08.09.2018				
92		08.09.2018				
93		08.09.2018				
94		08.09.2018				
95		08.09.2018				
96		08.09.2018				
97		08.09.2018				
98		08.09.2018				
99		08.09.2018				
100		08.09.2018				

1=1.6
 NO BURR ALLOWED AT EDGE
 エッジ面はかえりなきこと
 ROUND R2-3 WHERE NO INDICATION
 指定なきR部2〜3のこと
 PAINT COLOR: TITAN GRAY
 塗装色: タイタングレー



DMG MORI
 Title: MOUNTING PLATE
 Drawing Number: H0202303
 Rev.: A0102
 Type: Sheet
 Sheet: 1/1

3719



4- ϕ 7 HOLE
WELD M5 NUT FOR BACK SIDE

4- ϕ 9 HOLE
WELD M6 NUT FOR BACK SIDE

SPHC-P 11.6
PAINT COLOR: BLACK
塗色: 黒色

CORNER C2 WHERE NO INDICATION
隅取はC2にて
NO BURR ALLOWED AT EDGE
エッジ部はバリを許さず

ONLY INDICATED PARTS DIFFER FROM 5453053
← 指示部分のみ
5453053 之

The property and copyright of this drawing are retained by DMG MORI CO. Ltd. All rights reserved. 本図の権利はDMG MORI CO. Ltd.に帰属し、複製を禁じます。		Part Number: 5490254	Part Name: HIDEAKI NUMEDA	Draw Date: 16.11.2023	Drawn By: 5490254	Scale: 1:2	Sheet: 1/1
Material: SPHC-P	Third Angle Projection	Material: SPHC-P	Material: SPHC-P	Material: SPHC-P	Material: SPHC-P	Material: SPHC-P	Material: SPHC-P
Checked By: 5490254	Checked By: 5490254	Checked By: 5490254	Checked By: 5490254	Checked By: 5490254	Checked By: 5490254	Checked By: 5490254	Checked By: 5490254
Released By: 5490254	Released By: 5490254	Released By: 5490254	Released By: 5490254	Released By: 5490254	Released By: 5490254	Released By: 5490254	Released By: 5490254

DMG MORI
5490254
001 5490254 16.11.2023 HIDEAKI NUMEDA
Drawing Number: 5490254
Rev.: 001
Sheet: 1/1

23.11.16

管理文庫